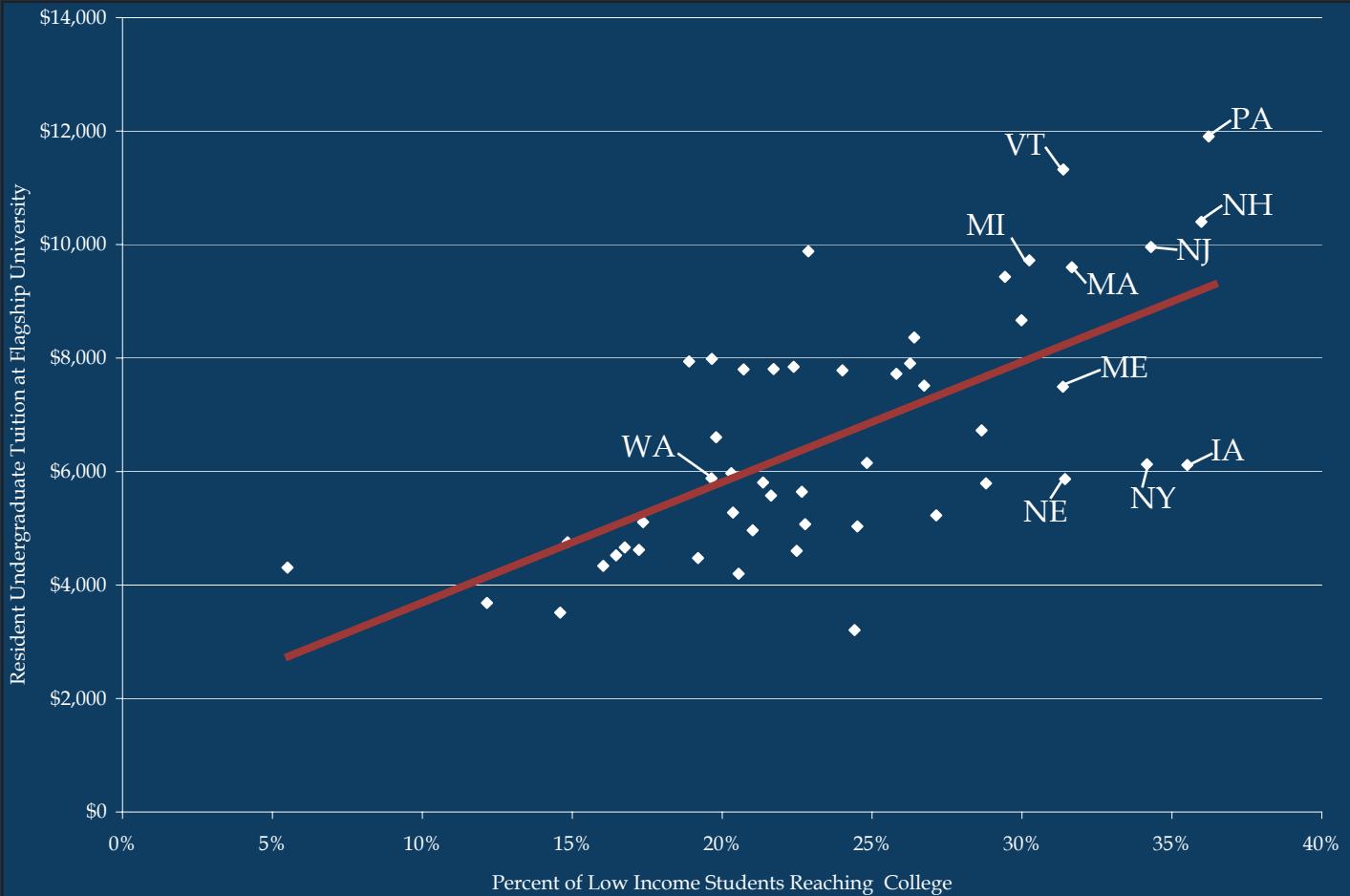


## Lower Tuition is Not the Best Form of Aid



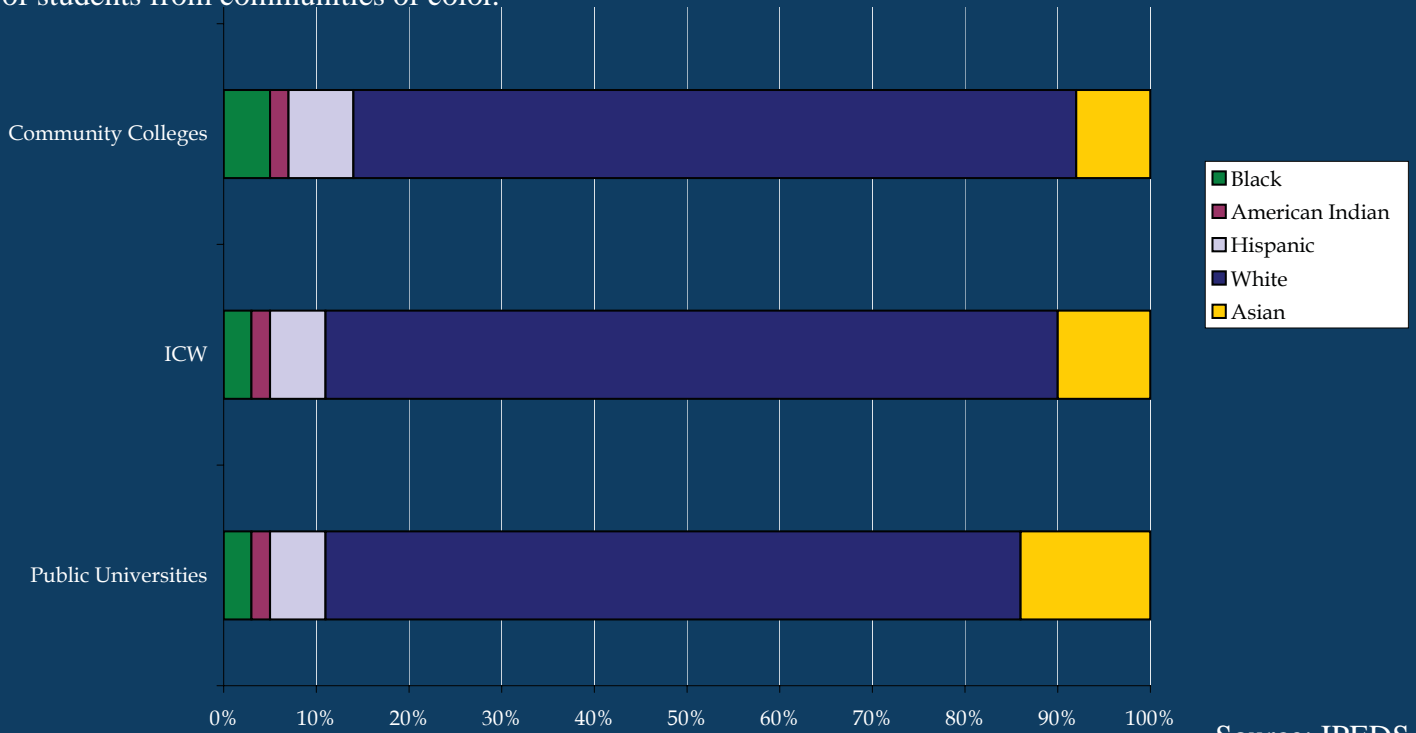
Source: Post-Secondary Opportunity and HECB

If it were true that low tuition is the best financial aid, then the line in the chart above would run from the top left (high tuition, low participation) to the bottom right (low tuition, high participation). In fact, it's typically states with higher tuition that get larger percentages of low-income students into college because of robust financial aid.

### Top 10 States with Low-Income Participation in Postsecondary Education

State	Rank	% Reaching College	Tuition and Fees
Pennsylvania	1	36%	\$11,905
New Hampshire	2	36%	\$10,401
Iowa	3	36%	\$6,115
New Jersey	4	34%	\$9,958
New York	5	34%	\$6,129
Massachusetts	6	32%	\$9,600
Nebraska	7	31%	\$5,867
Vermont	8	31%	\$11,324
Maine	9	31%	\$7,494
Michigan	10	30%	\$9,723
Washington	39	20%	\$5,880
National Average		24%	\$6,618

Another argument for low tuition is that high tuition will close opportunities for students from communities of color. That assertion is not borne out in the facts. Washington's private colleges serve the same percentage of students from communities of color.

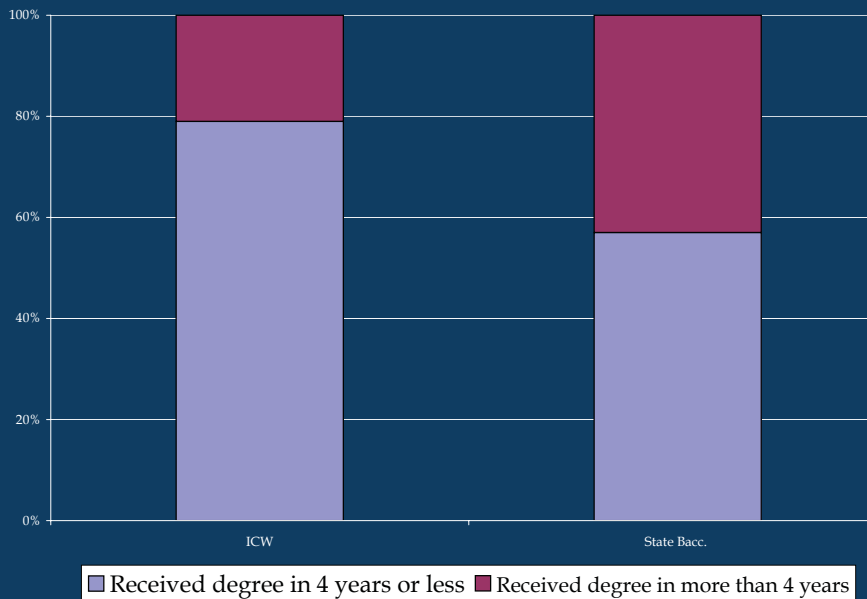


### Average Amount a Low-Income Family Pays at Washington's Independent Colleges

Tuition	\$23,019
Room and Board	\$6,261
-----	
Average Aid Package	\$29,280
Federal Aid	\$4,224
State	\$4,684
Institution	\$10,006
Loans	\$4,180
Work Study	\$2,440
-----	
Average amount a low-income family pays:	\$3,746

Source: IPEDS, CDS

At ICW institutions 79% of students who graduate do so in four years. At public universities 57% of students who graduate do so in four years.



Tuition policy is complicated, but a more market-based tuition policy, when coupled with strong financial aid, is not a barrier to attendance for those of modest means. Thousands of private colleges prove it every day.